

DG 10 060

Hydraulic modular test bench



Overview

This hydraulic modular test bench is our new standard chassis and custom tools, it could test several hydraulic components for example solenoid, HCM, gearbox.

DAM Group developed a new innovative machine integrated into an Industry 4.0 approach by developing the functionalities of adaptability and connectivity.



Test application:

AERO | AUTOMOTIVE | SOLENOID
HYDRAULIC SYSTEM



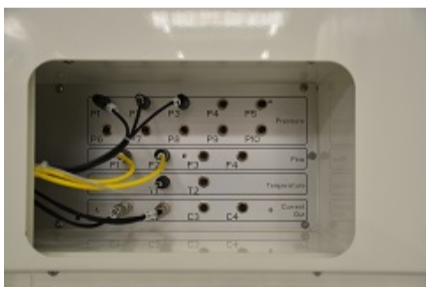
- Quick connection
- Optimized time to market
- Optimized cycle time

Key Features

- Used for laboratory and production
- Interchangeable tooling and cabinet
- Option with climatic chamber -40/150 °C
- Filtered Oil 3microm and temperature regulation +-1°C
- Data saving and complexe analysis

Benefits

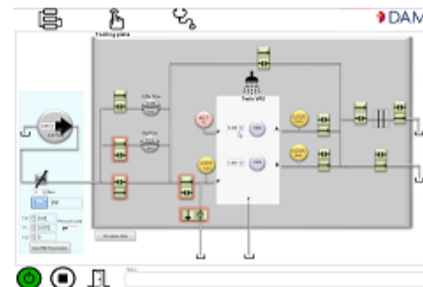
- Used by powertrain manufacturer leader for testing: Solenoid, DCT, AT, CVT, P2
- Quick connection electrical/ pneumatic/ hydraulic
- Optimized time to market
- Optimized cycle time test
- Clamping system and automatic DUT connection
- Consumption Energy optimisation



QUICK CONNECTION



INTERCHANGEABLE TOOLING



HYDRAUCORE



TESTED COMPONENTS

DG 10 060

Hydraulic modular test bench



DAM

DACTEM
DÉVELOPPEMENT

DAM Shanghai

Technical Data

Measurement

Sampling sensor frequency:	10 kHz
Sensor:	Flow/Pressure/Temp
Input Pressure:	up to 40 bars
Control pressure regulation:	less than 200 mBars
Input flow:	up to 40m/min

DUT Testing

Clamping system :	200 Bar
Standard tooling for solenoid	
Adaptation tooling for hydraulic control module	
Number for solenoid:	up to 16

Options

- DAM Data Management
- Toolkit

Software

Data saving:	database (MySQL MsSQL TDMS Excel fil System Link ready)
Analysis response time	
Hysteresis ripple pressure drop	
Ramp test analysis	
Step test analysis	

Data Communication

Data Communication:	CAN/modbus; TCP/IP ethernet/Profinet/CDS
Raw data:	10 kHz

Services

- Aftersale service
- Maintenance

Supplier of the world leaders

BorgWarner

BOSCH

Continental

Parker

More Info ? A Demo ? [→](#) **CONTACT US !**

dam@dam.fr

+33 4 78 26 95 83

DAM GROUP - 200, RUE LEON BLUM - 69100 VILLEURBANNE - FRANCE